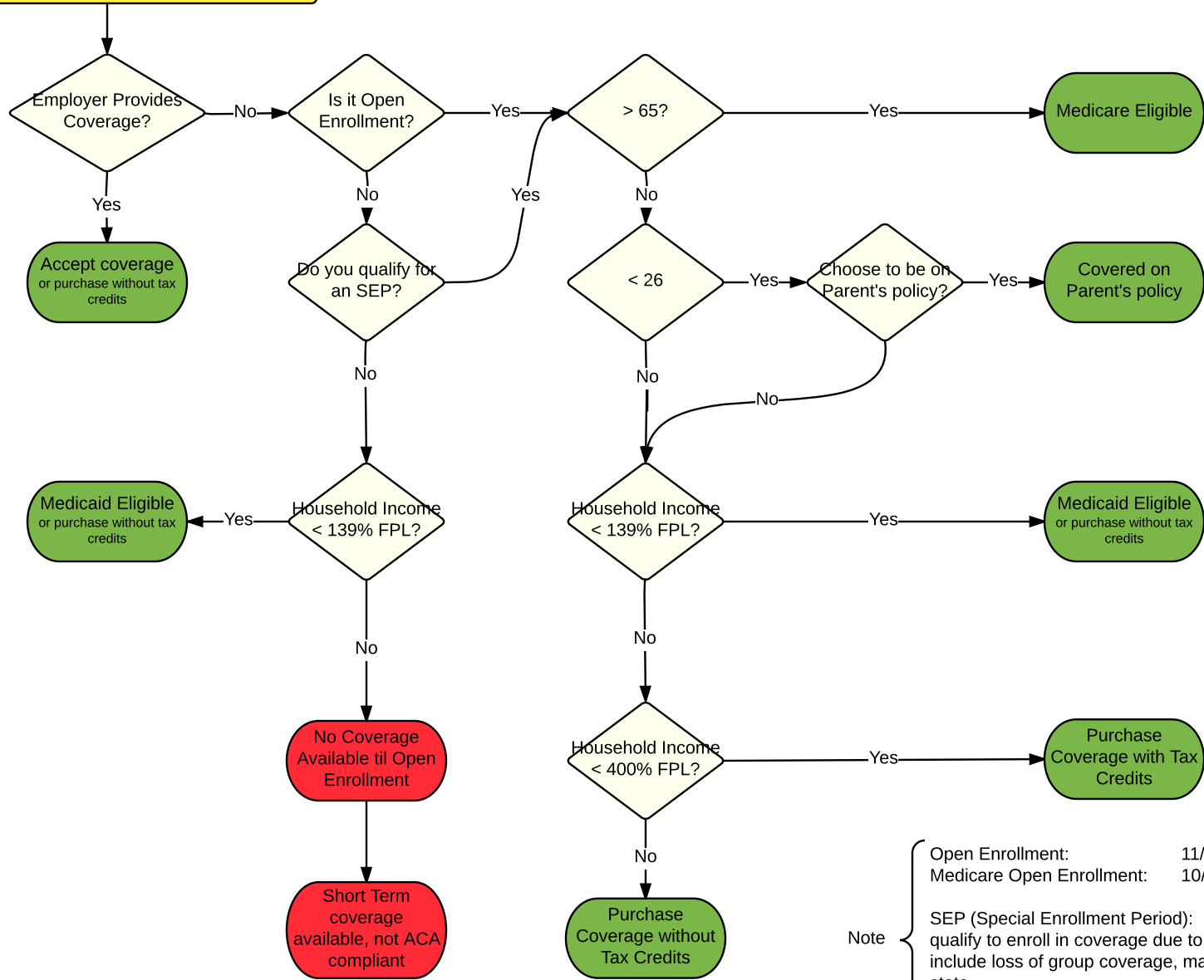


# Finding Health Insurance



Note {

- Open Enrollment: 11/01/2016 - 01/31/2017
- Medicare Open Enrollment: 10/07/2016 - 12/07/2106
- SEP (Special Enrollment Period): Period of time where you qualify to enroll in coverage due to a life event. Examples include loss of group coverage, marriage, move to a new state.
- Medicaid Enrollment is open year round.